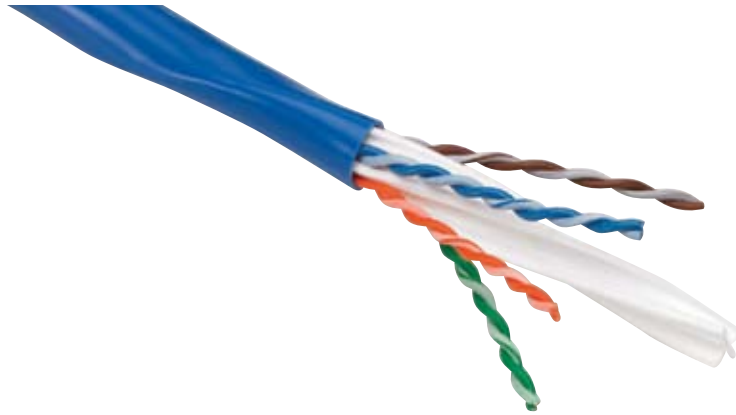


# TrueNet®

## CopperTen™ Cable



The TrueNet Augmented Category 6 Solution CopperTen supports 10 Gigabit Ethernet over unshielded Copper to a full 100m up to 500 MHz.

At high frequencies unshielded cabling systems are hindered by the technical combination of insertion loss and alien crosstalk (interference from adjacent cables). This can greatly disrupt transmission and high speed data communications.

TrueNet CopperTen cable utilises patented designs and manufacturing processes that enable the products to overcome these challenges.

The most noticeable difference when compared to Gigabit cables is the star filler which is now elliptical and offset. The filler keeps distance between not only pairs within the cable but also with the pairs in adjacent cables. The cable ellipse rotates along its length, creating a larger air footprint. The distance between all pairs is now maintained removing alien crosstalk.

TrueNet CopperTen cable is available as standard in a blue Low Smoke Zero Halogen sheath.

### Features

- Patented technology to minimise the effects of alien crosstalk and insertion loss
- Supports 10 Gigabit Ethernet over unshielded copper to a full 100m up to 500MHz
- Fully interoperable and backwards compatible with component compliant Category 5e / Class D and Category 6 / Class E systems
- Guaranteed channel capacity that is equal to or greater than the capacity identified by the IEEE as the minimum requirement for operation on 10GBase-T

### Benefits

- A lower cost route to achieve 10 Gigabit performance in the Enterprise Network
- Maximises productivity levels with 10 times the data throughput
- Minimum network latency
- True future proofing for tomorrow's network applications
- Covered by the TrueNet System Warranty

TECHNICAL DATA



**Technical Assistance:**  
**Europe & Middle East**  
+32 2 712 6542  
euro.tac@adckrone.com  
www.adckrone.com

**South Africa**  
+27 11 466 3333  
infos@adckrone.com

**United Kingdom**  
0800 960236  
contactuk@adckrone.com

## Ordering Information

Description	Catalogue number
305m CopperTen blue LSZH reel	10G-A6TZ1-BLM2

Other cable types and colours are available subject to availability.  
Please contact ADC KRONE Customer Services for details.

### Electrical Data

DC Resistance at 20°C (max)	9.38Ω / 100m
DC Resistance Unbalanced (max)	2%
Mutual Capacitance at 20°C (max)	5.6nF / 100m
Operating Voltage (max)	300 V DC
Worse Case Cable Skew	40 ns / 100m
Nominal Velocity of Propagation	65%

### Construction

Conductor	23 AWG solid bare copper
Insulation	100% Polyolefin
Separator	100% Polyolefin
Jacket	Low Smoke Zero Halogen
Nominal Outside Diameter	7.62mm – 6.5mm x 8.4mm

### Environmental

Transport and Storage	-20° to 75°C
Installation	4° to 50°C
Operation	-20° to 75°C

### Compliances

Flammability	IEC 60332-1
Smoke Density	IEC 61034
Acid Gas	IEC 60754-1
pH	IEC 60754-2
Fire Load	828 KJ/m (.23 kWh/m)
Augemented Category 6	
Horizontal Cable Requirements	TIA/EIA 568-B.2-10 (draft)
Category 6A Horizontal Cable Requirements	IEC 61156 series (draft) [ref. ISO/IEC 11801]

TECHNICAL DATA



#### Web Site: [www.adckrone.com](http://www.adckrone.com)

**UK Office:** ADC Communications (UK) Ltd., Runnings Road, Kingsditch Trading Estate, Cheltenham, Gloucestershire GL51 9NQ, United Kingdom • Phone: +44 (0) 1242 264 400 Fax: +44 (0) 1242 264 488 contactuk@adckrone.com

**South African Office:** ADC Communications (Africa) (Pty) Ltd., 59 Kyalami Business Park, Midrand, 1685, Johannesburg, South Africa • Phone: +27 11 466 3333 Fax: +27 11 466 3300 Email: infosa@adckrone.com

**EMEA Office:** ADC GmbH, Beeskowdamm, 3-11, 14167 Berlin, Germany • Phone: +49 308 453 1818 Fax: +49 308 453 1703. For a listing of all ADC KRONE's global sales office locations, please refer to our web site.

Specifications published here are current as of the date of publication of this document. Because we are continuously improving our products, ADC KRONE reserves the right to change specifications without prior notice. At any time, you may verify product specifications by contacting ADC GmbH headquarters in Berlin. ADC Telecommunications, Inc. views its patent portfolio as an important corporate asset and vigorously enforces its patents.

**Part Number 101738BE Apr 06 Original © 2006 ADC Communications (UK) Ltd. All Rights Reserved**